



HIGH PERFORMANCE COMPONENTS



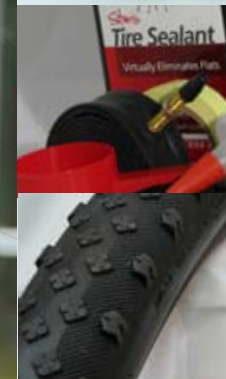
The way tubeless was meant to be.

NoTubes.com

How about a client story or recent race results in here in the dark grey section on this page? Not too long, just something to draw people in to looking further.

HIGH PERFORMANCE COMPONENTS

The way tubeless was meant to be.



INDEX

- 3 Tubeless Conversion Kit
- 4 Tubeless Kits & Rim Strip Options
- 5 Stan's Tire Sealant
- 6 Tire Sealant 12 Pack
The Injector
- 7 ZTR Rim Features
- 8 ZTR RACE wheelset
- 9 ZTR Rims - Olympic & 355
- 10 ZTR Rims - Flow & Arch
- 11 Popular Wheel Builds
- 12 Custom Wheel Building
- 13 Hubs
- 14 Valves & Tape
- 15 Tubeless Ready Tires
- 16 Brakes & Pads
- 17 Digital Scales
- 18 Clothing

NoTubes.com



TUBELESS CONVERSION KITS



THE ORIGINAL

Stan's patented tubeless conversion kits can be used to convert existing tube type wheels to tubeless. The conversion allows the use of standard tires in a tubeless manner, or the use of tubeless tires on conventional rims.

Each kit contains the following:

- Two molded rim strips with integrated valve
- One pint of Stan's Tire Sealant*
- One roll of Universal Kit Tape
- Detailed installation instructions
- NoTubes decal



ROAD TUBELESS KIT

Make your normal clincher wheel tubeless with the Road Tubeless Kit.

The Road Tubeless Kit contains the following:

- Two Tires
- Two 2oz bottles of sealant
- One roll of 21mm Yellow Tape
- Detailed installation instructions
- NoTubes decal



TUBELESS CONVERSION KITS

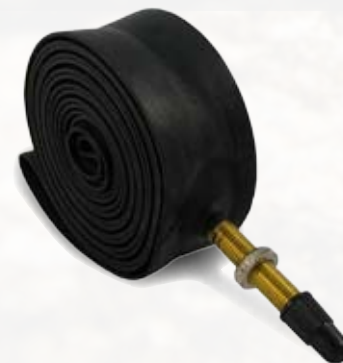
TUBELESS KITS

- KT01** - Standard Tubeless Kit
- KT02** - Downhill Tubeless Kit*
- KT03** - Freeride Tubeless Kit
- KT04** - Rhyno Lite Tubeless Kit
- KT05** - 29er Tubeless Kit
- KT08** - Plus Four Tubeless Kit
- KT09** - Cyclocross Tubeless Kit **NEW!**

* Downhill Kit contains one quart of Stan's Tire Sealant

RIM STRIPS

- RS01** - Standard Rim Strip
- RS02** - Downhill Rim Strip
- RS03** - Freeride Rim Strip
- RS04** - Rhyno Lite Rim Strip
- RS05** - 29er Rim Strip
- RS06** - Olympic Rim Strip
- RS08** - Plus Four Rim Strip
- RS09** - Cyclocross Rim Strip **NEW!**
- RS15** - Flow Rim Strip



RIM COMPATIBILITY

Standard

This kit or rim strip will fit most standard 26 & 24 inch, 21.5-25mm wide mountain bike rims. Works with Mavic UST, Mavic XC717 (old 517 & 317), XM719 (old 519), 223; AC 350 26" & 29"; Sun 0° XC, UFO, DS1, DS2, EQ23; DT 4.1, 4.2, 5.1; Easton XC1; Bontrager Mustang, Mustang 29" and others.

Olympic

This rim strip will fit. ZTR Olympic, 355, 355 650b, 355 29er, Arch 29er, And also a light weight to fix UST rims.

Flow

This rim strip will fit. ZTR Flow, Flow 29er, Bontrager Rhythm, Duster.

Downhill

Designed to fit most 26 inch and 24 inch rims 36mm to 39mm wide. Including: Mavic EX729 (old 321), Sun Double Wide, WTB Laser Disc DH, and Intense DH.

Freeride

The Freeride version will fit most 27mm to 34mm wide rims. Including: Sun Rhyno Lite XL, MTX, Singlewide, Single Track, EQ27; DT 6.1; Syncros DS28; Salsa Gordo, WTB 30mm Dual Duty, Alex DM24, Supra D; Velocity Blunt and similar rims.

Rhyno Lite

This is a specific kit or rim strip designed to fit the Sun Rhyno Lite; Mavic 521,

EX721, XM321 (old 219); Easton Havoc.

Plus Four

A specific kit and rim strip made to fit the first generation ZTR 355 29er; Velocity VXC 29er; DT TK 7.1, X470; Mavic TN719 and similar rims.

29er

This kit or rim strip is for 29" rims including: Bontrager rim brake, Salsa Delgado-X, and Mavic 520 Touring rims.

Cyclocross - NEW!

A kit and rim strip designed to convert standard 700c rims for road and cyclocross use. Road use only with Hutchinson Road Tubeless tires.

For the latest compatibility and fit tips visit help.notubes.com

Stan's TIRE SEALANT

Just two ounces of Stan's Tire Sealant in a converted standard tire or a tubeless tire can repair up to a 1/4" hole instantly. The secret weapon of racers worldwide and the savior of countless trail riders, Stan's Tire Sealant works wonders on punctures caused by thorns, cactus, goat heads, nails, or pinch flats.

Unlike other tire sealants, Stan's Tire Sealant is a very thin, low viscosity liquid that coats the inside of the tire and carries with it specially formulated sealing crystals. The thin coating is able to seal small punctures instantly while the larger crystals work to fill major punctures up to 1/4".

VIRTUALLY ELIMINATES FLATS

Stan's Tire Sealant will stay liquid in a mountain bike tire with a thin casing for two to seven months on average. Riding in arid climates or storing the bike in a hot area will require more frequent monitoring of sealant levels. Special anti-freeze agents allow the sealant to be used in environments as cold as -30° F.



SIZE OPTIONS

- ST01** - Stan's Tire Sealant, Pint
- ST02** - Stan's Tire Sealant, Quart
- ST05** - Stan's Tire Sealant, 2 oz.

TIRE SEALANT

ST08 - Stan's Tire Sealant, 2 oz. bottle 12 pack

A 12 pack point of purchase display box of our convenient, 2 ounce pre-filled bottles for one application in a bicycle tire. Easily fits in a backpack or saddle bag. A must have for the repair kit and perfect for any tubeless tire installation.



AS05 - The Injector

Two ounce injector makes application of sealant simple, with no mess or waste of sealant. Also allows for transfer of sealant from one tire to another. Now with rubber seal for easier operation.

Features a universal presta/schrader valve fitting.



MANY OTHER USES

Stan's Tire Sealant can be used in any tubeless tire with a removable valve core such as lawn tractors, wheelbarrows, or ATVs.

Effective in tubes and can be added to any tube with a removable valve core.

ZTR RIMS & WHEELSETS

LIGHT WEIGHT, INCREASED TIRE VOLUME & LESS PINCH FLATS

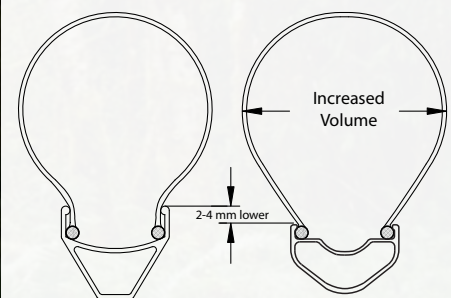
The NoTubes ZTR rim lineup represents the cutting edge of modern rim design. All rims are designed utilizing the latest in finite element analysis as well as tremendous amounts of information from destructive testing and feedback from some of the best riders in the world. ZTR rims are light weight and designed to be used tubeless with Stan's Tire Sealant.

Our exclusive, patented, **Bead Socket Technology** allows for lower sidewall heights, effectively increasing tire volume while decreasing the chance of pinch flats. All ZTR rims feature fully welded joints and a black anodized finish.



BST - Bead Socket Technology

A proprietary, patented design feature which incorporates an inner curve that is the same size and shape as the tire bead to create a tighter tubeless seal and reduce strain on the tire beads.



Standard Rim Rim with BST™

ABT - Advanced Brake Track

A smooth, raw aluminum finish for more consistent and controlled braking in all conditions.



ZTR RACE

The ZTR RACE wheelset is designed with the highest levels of competition and performance in mind. The ultra light-weight 284 gram rims use a wider than normal rim cavity, which provides better support for the tire beads. Spreading the beads further apart, increasing tire stability, traction and allowing for very low tire pressures to be used.

The ZTR RACE rim is designed using Bead Socket Technology for a superior tubeless seal. It comes with a yellow rim tape installed and a tubeless valves installed.



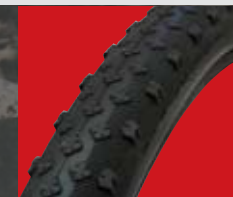
7000 series - ZTR RACE Wheelset Available only as a complete wheelset

AC disc hubs, custom black DT Swiss Revolution 1.8/1.5 spokes and red alloy nipples, with yellow tape and valves installed.

WS50 - ZTR Race 7000 series AC quick release
WS51 - ZTR Race 7000 series Cannondale Lefty

ONLY 1210 GRAMS!

We recommend using the new Raven or Crow tubeless ready tires with Stan's Tire Sealant for a super fast tire and wheel combination.



Features

- Complete disc tubeless wheelset weight of 1210 grams (including tape and valves)
- Rim weight 284g, making it the lightest production rim offered
- Intended for low pressure use: 15 - 33 PSI with 2.0" tires
- Recommended rider weight limit of 170 pounds

Race Proven & Tested

- Race tested for two years including multiple World Cup podiums, wins at the US National Championships, UK National Championships, European Championships, World Championships, Cape Epic, Commonwealth Games, and many more. **New text coming soon!!!!**

ZTR RIMS OPTIONS

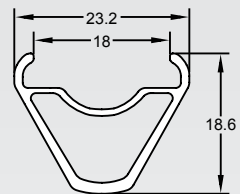
ZTR OLYMPIC

26" DISC BRAKE

UNDER 385 GRAMS



The total package of light, stiff and responsive. The ZTR Olympic remains our best selling rim, and for good reason. The first rim to feature BST™, the Olympic forms the basis for one of the lightest tubeless wheelsets on the market. Often found on the podium of the most demanding races the world over, the ZTR Olympic has been leading the way since 2004.



Fully tubeless compatible with the yellow tape and valve stem, or the Olympic rim strip.

Rim Size Options

- TR07** - ZTR Olympic 347g 32H (guaranteed within 5g)
- TR21** - ZTR Olympic 32H (<385g)
- TR35** - ZTR Olympic 28H (<385g)



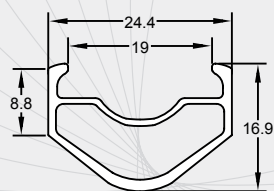
ZTR 355

DISC & RIM BRAKE 26", 650b, 29"



CROSS COUNTRY

A little heavier than the ZTR Olympic but also a little more stiff laterally and a bit more resistant to denting, the ZTR 355 is great for racing or light trail use. The ZTR 355 is inherently stiff due to the box style cross-section and is available in a fully anodized finish for disc wheels or with ABT sidewalls for rim brake use.



Fully tubeless compatible with the yellow tape and valve stem, or the Olympic rim strip.

Rim Size Options

- TR22** - 26" - ZTR 355 32H
- TR30** - 26" - ZTR 355 32H ABT
- TR34** - 26" - ZTR 355 28H ABT
- TR38** - 29er - ZTR 355 29ER 32H
- TR48** - 650b - ZTR 355 32H



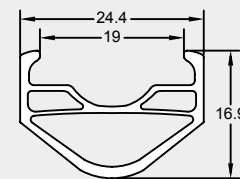
ZTR ARCH

26", 29" DISC BRAKE

AGGRESSIVE XC



Introduced in early 2007 the ZTR Arch has quickly become a popular choice for trail duty and our most popular 29er model. Based on its little brother the ZTR 355 the Arch is over 25% more stiff laterally with only a slight gain in weight. The added stiffness comes from the internal arch that was incorporated after extensive real world testing and finite element analysis.



Fully tubeless compatible with the yellow tape and valve stem, or the Olympic rim strip.

Rim Size Options

- TR44** - ZTR Arch 32H
- TR45** - ZTR Arch 29ER 32H



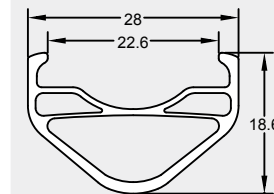
ZTR FLOW

26", 29" DISC BRAKE

ALL MOUNTAIN



The heavy hitter of the lineup and quickly becoming a favorite of the 29er crowd, the Flow rims have also found their way to the pro Super-D podium. Designed with all mountain use in mind, the Flow also utilizes the internal arch design for an incredibly stiff rim in a lightweight package.



Fully tubeless compatible with the yellow tape and valve stem, or the Flow rim strip.

Rim Size Options

- TR42** - ZTR Flow 32H
- TR43** - ZTR Flow 29ER 32H
- TR47** - ZTR Flow 29ER 36H



OLYMPIC SPECS

SKU	Size	Hole #	Brakes	Weight	iso	ERD	Tape width
TR07	26"	32	Disc	347g	559x18	536	21mm
TR21	26"	32	Disc	<385g	559x18	536	21mm
TR35	26"	28	Disc	<385g	559x18	536	21mm

355 SPECS

SKU	Size	Hole #	Brakes	Weight	iso	ERD	Tape width
TR22	26"	32	Disc	355-375g	559x19	540	21-25mm
TR30	26"	32	V-Brake	355-375g	559x19	540	21-25mm
TR34	26"	28	V-Brake	355-375g	559x19	540	21-25mm
TR38	29"	32	Disc	405g	622x19	604	21-25mm
TR48	650b	32	Disc	385g	584x19	564	21-25mm

ARCH SPECS

SKU	Size	Hole #	Brakes	Weight	iso	ERD	Tape width
TR44	26"	32	Disc	420g	559x19	540	25mm
TR45	29"	32	Disc	470g	622x19	604	25mm

FLOW SPECS

SKU	Size	Hole #	Brakes	Weight	iso	ERD	Tape width
TR42	26"	32	Disc	470g	559x22.6	536	25mm
TR43	29"	32	Disc	525g	622x22.6	600	25mm
TR47	29"	36	Disc	525g	622x22.6	600	25mm

ZTR RIMS OPTIONS

TUBELESS COMPATIBILITY

All ZTR Rims may be used with tubes or setup tubeless following the chart below.

	21mm Yellow Tape, Olympic Valve Stem, Sealant	25mm Yellow Tape, Olympic Valve Stem, Sealant	Olympic Rim Strip, Thin spoke tape, Sealant	Flow Rim Strip, Thin spoke tape, Sealant
ZTR Olympic	X		X	
ZTR 355	X	X	X	
ZTR 355 29er	X	X	X	
ZTR Arch		X	X	
ZTR Arch 29er		X	X	
ZTR Flow		X		X
ZTR Flow 29er		X		X

* Standard or tubeless tires may be used on the ZTR rims. When using tubeless tires, use only the yellow tape method.

POPULAR BUILD COMBINATIONS

26" WHEELS

Rims	Hubs	Spokes	Nipples	Weight
ZTR Olympic 347	AC Disc	1.8/1.5 DT Revolution silver	silver alloy	1345 grams
ZTR 355	AC Disc	2.0/1.5 DT Revolution black	red alloy	1425 grams
ZTR Arch	DT 240s Disc	2.0/1.7/1.8 DT Supercomp black	black alloy	1620 grams
ZTR Flow	Hope Pro II Disc	2.0/1.7/1.8 DT Supercomp black	black alloy	1775 grams

29" WHEELS

Rims	Hubs	Spokes	Nipples	Weight
ZTR 355 29er	AC Disc	2.0/1.7/1.8 DT Supercomp silver	red alloy	1605 grams
ZTR Arch 29er	WTB Laser Disc Lite	2.0/1.7/1.8 DT Supercomp black	silver alloy	1735 grams
ZTR Flow 29er	Hope Pro II Disc hubs	2.0/1.7/1.8 DT Supercomp black	black alloy	1930 grams

All stated weights are approximate and include Stan's spoke tape with valve stems for tubeless use. Skewer weights are not included.



CUSTOM WHEELS

The NoTubes philosophy in custom wheel building is to produce the lightest wheelset using the highest quality components that will meet the rider's every need. Attention to detail during the building process is paramount in producing a long lasting wheelset and it is also our specialty. Every custom wheel is laced, trued, and stress relieved by hand until it meets our strict standards of even spoke tension, lateral and vertical runout.



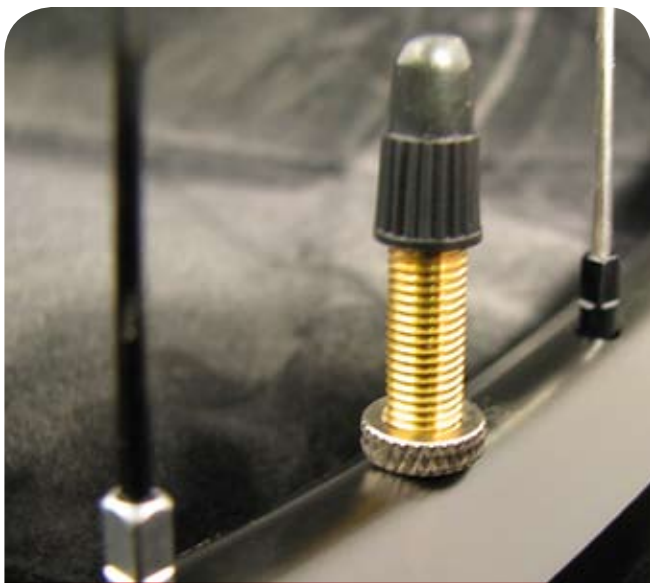
ATTENTION TO DETAIL

Custom builds take many factors into account including rider weight, riding style, intended use, the bike the wheels will be used on, any previous trouble with wheels and the type of terrain where the wheels will be used.

The information collected is then used to configure the wheelset with the proper rim, hub, spoke, and lacing pattern to meet the demands of the particular rider.



HUBS, VALVES & TAPE



6 Bolt Disc, Quick Release

- AC Hubs
- DT Swiss 240s
- WTB Laser Disc Lite
- Hope Pro II

Center Lock Disc, QR

- DT Swiss 240s

Rim Brake (Non-disc), QR

- AC Hubs
- DT Swiss 240s

20mm Thru Axle

- DT Swiss 240s 20mm
- WTB Super Duty 20mm
- Hope Pro II 20mm conversion



Single Speed

- AC Disc QR
- AC Disc Bolt-On
- DT Swiss 240s Center Lock QR
- WTB Single Duty Bolt-On
- Hope Pro II Bolt-On

Other

- CycleOps Power Tap Disc
- Cannondale Lefty
- Maverick 24mm
- Hope Pro II Maverick conversion
- Hope Pro II 15mm conversion



QUALITY OPTIONS



AS27 - Valve Core Remover

Removes presta and schrader valve cores. CNC machined, anodized finish with laser etched logo. Fits between spokes for quick and easy core removal.

All valve stems feature removable valve cores



AS06 - Stan's UST Valve Stem

Compatible with Mavic, Shimano, and Bontrager Tubeless rims.

AS07 - Stan's Standard Valve Stem

To be used with standard, tube-type rims utilizing the original taping method.

AS01 - Presta Removable Valve Core

Replacement core for our presta valve stems and presta valve equipped rim strips.

AS37 - Stan's Road Tubeless Valve Stem

To be used with 700c rims using the yellow tape or Mavic Ksyrium rims. 44mm long.

AS13 - Stan's Olympic Valve Stem

Compatible with the ZTR Olympic, ZTR 355, ZTR Flow, and ZTR Arch.

AS10 - Presta-Schrader Adapter

Adapts presta valves for use with standard schrader pumps.



AS28 - Air Bob Universal Inflator

- Works on presta and schrader valves
- Integrated 0-160 PSI gauge with bleeder valve for precise air pressure adjustment
- Trigger activated
- Comes with 1/4" Industrial Standard quick coupler plug
- Accepts any 1/4" male NPT airline fitting

Stan's Yellow Rim Tape

Can be used with our ZTR rims to make them air tight or used as a light weight rim tape in any rim. 21mm width fits ZTR Olympic and ZTR 355. ZTR Arch and ZTR Flow rims require 25mm width.

1 roll will tape up to (5) 26" rims or (4) 29" rims.

AS12 - 10 yards x 21mm wide

AS33 - 10 yards x 25mm wide

AS34 - Universal Kit Tape

The same lightweight tape included with the Tubeless Kits. An economical choice for use under the rubber rim strips or with a tube.



THE RAVEN



NoTubes is proud to introduce the new tubeless ready Raven. Using the same ultra fast rolling tread pattern and dual durometer rubber as the Crow, but with taller side knobs and wide tire casing for even better traction in all riding conditions.

The NEW Raven Tire Features

- Available in 26" x 2.2", 26" x 2.0", 29" x 2.2", 29" x 2.0" and 700 x 35c sizes
- Designed to be used at low pressures
- Can be used with tubes or tubeless with Stan's tire sealant
- Low rolling resistance design features dual compound rubber
- 29" tire features extra strong folding bead design
- 120 TPI casing has several improvements over standard tires for easier sealing
- Non-directional tread pattern, not front or rear specific
- Larger side knobs than the Crow for increased traction when cornering

Tech Tip

To determine a starting tire pressure when running NoTubes tires with our ZTR rims use this simple formula:
 Rider weight divided by 7 = x
 x - 1 = Front tire pressure
 x + 2 = Rear tire pressure

The Raven Sizes

BT22 - 26x2.2 (559-57) Folding Bead	120 TPI	20-43 PSI	450 grams
BT24 - 26x2.0 (559-50) Folding Bead	120 TPI	20-43 PSI	400 grams
BT25 - 29x2.0 (622-50) Folding Bead	120 TPI	20-40 PSI	500 grams
BT26 - 29x2.2 (622-57) Folding Bead	120 TPI	20-40 PSI	5xx grams
BT23 - 700x35c (622-35) Folding Bead	120 TPI	20-45 PSI	3xx grams

The Crow Sizes

BT20 - 26x2.0 (559-50) Folding Bead	120 TPI	20-43 PSI	410 grams
BT21 - 29x2.0 (622-50) Folding Bead	120 TPI	20-40 PSI	500 grams

INCREASED TRACTION

BRAKES & PADS



KOOL STOP DISC BRAKE PADS

- Semi-metallic pad compound compatible with our Coated Aluminum Rotors and all steel rotors
- Pad models with aluminum backing plates save approximately 9 grams per set over the steel version

- BS04** - Hayes Hydraulic
- BS05** - Shimano XTR
- BS06** - Shimano XT/Grimeca
- BS07** - Avid Mechanical/Juicy
- BS09** - Formula B4
- BS12** - Magura Marta
- BS18** - Hope Mono Mini
- BS27** - Hayes El Camino
- BS34** - Formula Oro
- BS28** - Avid Juicy w/ aluminum backing plates
- BS31** - Shimano XTR w/ aluminum backing plates
- BS32** - Hayes Hydraulic w/ aluminum backing plates
- BS33** - Formula B4 w/ aluminum backing plates
- BS35** - Hayes El Camino w/ aluminum backing plates
- BS42** - Formula Oro w/ aluminum backing plates

MAGURA MARTA DISK BRAKE SYSTEMS

Lightweight fully hydraulic brake system, pre-bled and ready to mount.

BS01 - Marta IS mount
 front with 160mm Coated Aluminum Rotor, titanium rotor bolts, titanium caliper mounting bolts, and aluminum lever pinch bolt (307 grams)

BS25 - Marta post mount
 front with 160mm Coated Aluminum Rotor, titanium rotor bolts, titanium caliper mounting bolts, and aluminum lever pinch bolt (297 grams)

BS02 - Marta IS mount
 rear with 160mm Coated Aluminum Rotor, titanium rotor bolts, titanium caliper mounting bolts, and aluminum lever pinch bolt (307 grams)

BS26 - Marta post mount
 front with 160mm Coated Aluminum Rotor, titanium rotor bolts, titanium caliper mounting bolts, and aluminum lever pinch bolt (356 grams)

BS10 - Marta IS mount
 front with stock 160mm wave steel rotor and steel hardware (356 grams)

BS11 - Marta IS mount
 rear with stock 160mm wave steel rotor and steel hardware (377 grams)

BS26 - Marta post mount
 front with stock 160mm wave steel rotor and steel hardware (356 grams)



Titanium Rotor Bolt Kit

BS40 - Kit contains (6) button head, T-25 Torx bolts. Total weight of 7.1 grams.

DIGITAL SCALES

SC01 - Ultimate Alpine Digital Scale

- 10g / 0.02 lb. display resolution
- accurate to within 0.005 x actual
- rugged, shock-resistant housing
- load capacity 55 lbs. (25 kg)
- vinyl-covered hook
- easy-to-read LCD display
- zero / tare function
- kg / lb. selection
- auto shut-off saves power
- (4) AAA batteries included
- 1-year warranty



SC02 - Ultimate Table Top Digital Scale

- 3 kg. (6.6 lbs.) capacity
- single digit gram resolution
- accuracy is +/- 1.0 g, 0.1 oz. or 0.002 lb.
- 5.5" x 5.5" metal weighing surface
- easy to read LCD display
- reads in grams, ounces and pounds
- zero / tare function
- (2) AAA batteries included
- auto shut-off
- 1-year warranty



CLOTHING



Back



Front

AP15 - Stan's NoTubes T-Shirt NEW!

Pre-shrunk 100% ring-spun cotton 6.1 ounce heavyweight t-shirt Hanes Beefy-T Tagless. Sizes: Small, Medium, Large, XLarge

AP14 - Stan's NoTubes Ladies T-Shirt NEW!

Pre-shrunk 100% combed ring-spun cotton 5.8 ounce super soft. Sizes: Small, Medium and Large



LADIES - Back

LADIES - Front



AP05 - NoTubes.com Hat

Black, low profile, six panel soft brushed cotton construction. Adjustable material band with metal buckle, one size fits all.

Stan's NoTube Socks

- AP08 - NoTubes Socks, Large
- AP09 - NoTubes Socks, Medium
- AP10 - NoTubes Socks, Small

All sizes feature 2-3/4" cuff. Core spun Coolmax® and nylon blend socks made in Denver, Colorado.



NoTubes.com



The way tubeless was meant to be.

Staris

NoTubes.com



In Deutschland: www.NoTubes.net • Tel.: +49 (0) 30 81 01 58 70 • Fax: +49 (0) 30 81 01 58 71 • email@revolutionsports.eu
Revolution Sports Vertrieb • Riemeisterstraße 39b, 14169 Berlin